

HORIZONTAL CONTINUOUS CAST (AND TURNED) ROUND BRASS BARS



DIMENSIONS AND STANDARDS

| Correspondent alloys | | | Standard, temper | Diameter | Applications |
|-----------------------------------|---------------------------------|-----------------------------------|---|-----------------|--|
| Alloys as per EN standards | Alloys as per ASTM standards | Alloys as per SAE standards | | | |
| CC762S (CuZn25Al5 Mn4Fe3-C) | C86200 (CuZn25Al4 Mn4Fe3) | _____ | Continuous cast EN 1982 GC ASTM B505/B505M M07 | Ø 150-270 mm | Pistons for hydraulic pumps, bearings, other parts resistant to high mechanical stress and in corrosive environments, including sea water |
| | C86300 (CuZn25Al6 Mn4Fe3) | _____ | | | |
| CW508L (CuZn37) | _____ | _____ | | | Plastic deformation |
| CW603N (CuZn36Pb3) | C36000 (CuZn36Pb3) | _____ | | | |
| CW608N (CuZn38Pb2) | C37700 (CuZn38Pb2) | _____ | | | |
| CW614N (CuZn39Pb3) | _____ | _____ | | | |
| CW617N (CuZn40Pb2) | _____ | _____ | | | |
| CW708R (CuZn31Si1) | _____ | _____ | | | |
| CW710R (CuZn35Ni3 Mn2AlPb) | _____ | _____ | | | |
| CW713R (CuZn37Mn3 Al2PbSi) | _____ | _____ | | | |
| CW723R (CuZn40 Mn2Fe1) | _____ | _____ | | | |
| Cu470a (CuZn40Si) | _____ | _____ | | | |
| _____ | _____ | C67300 (CuZn34Mn3 Pb2Si1) | | | SAE J461 SAE J463 M07 |

By request, LAROMET can offer horizontal continuous cast (and turned) round bars made of other brass types.

BRASS RODS AND BARS FOR GENERAL APPLICATIONS



ALLOY STANDARDS AND SYMBOLS

| Correspondent alloys | | | |
|-------------------------------|------------------------------|----------------------------------|---|
| Alloys as per EN standards | Alloys as per SAE standards | Standards | Applications |
| CW508L (CuZn37) | _____ | EN 12163 EN 12165 EN 12167 | Lids, rivets |
| CW708R (CuZn31Si1) | _____ | | High tensile machine parts, bearings, parts for gear boxes, cylinders, valves, slideways |
| CW710R (CuZn35Ni3 Mn2AlPb) | _____ | | Components for aircrafts, bolts, nuts, propeller shafts, rivets, valves, bearings, bushings |
| CW723R (CuZn40Mn2Fe1) | _____ | | Forging, mechanical processing, manufacture of components for hydraulic and mechanical engineering industry |
| _____ | C67300 (CuZn34Mn3 Pb2Si1) | SAE J461 SAE J463 | Forged pistons for water pumps, gears, components for axial piston pumps, bushings, bearings |

SHAPES AND DIMENSIONS

| Shape | Manufacturing Process | Dimensions | Temper* |
|-------|-----------------------|--|--|
| | Hot extruded | Diameter: > 80-140 mm | As per EN standards: M – hot extruded M – cold drawn <u>Half hard:</u> R370 / H105; R460 / H110 R370 / H085; R420 / H105 R460 / H120; R400 / H105 <u>Hard (only for CW508L):</u> R460 / H140 R460 / H105 As per SAE standards: M30 – hot extruded O60 – annealed H02 – half hard H04 – hard |
| | Cold drawn | Diameter: 5-80 mm | |
| | Hot extruded | Side: > 60-90 mm | |
| | Cold drawn | Side: 5-60 mm | |
| | Hot extruded | Across flat: > 60-90 mm | |
| | Cold drawn | Across flat: 5-60 mm | |
| | Hot extruded | Width: 60-120 mm Thickness: 25-60 mm Section area: > 3000-7000 mm ² | |
| | Cold drawn | Width: 5-100 mm Thickness: 3-30 mm Section area: < 3000 mm ² Width / thickness ratio: max.12 | |

*Temper depends on alloy and standard.

By request, LAROMET can offer rods and bars for general applications made of other brass types.

PRODUCTION & SALES CENTER RUDENI
21-25 MACULUI Street, RUDENI, ILFOV County
+40 727 334 518 / +40 727 334 396 / +40 21 208 56 08
sales@laromet.ro

PRODUCTION & SALES CENTER BRAȘOV
60 CARPAȚILOR Street, BRAȘOV, BRAȘOV County
+ 40 733 337 385 / + 40 722 257 714 / + 40 729 036 743
sales@laromet.ro

BRASS RODS AND BARS FOR MECHANICAL PROCESSING ON MACHINE TOOLS



ALLOY STANDARDS AND SYMBOLS

| Correspondent alloys | | | |
|------------------------------|------------------------------|--|--|
| Alloys as per EN standards | Alloys as per ASTM standards | Standards | Applications |
| CW603N (CuZn36Pb3) | C36000 (CuZn36Pb3) | EN 12164 EN 12165 EN 12167 | Mechanical processing on machine tools, riveting and turning, manufacture of various parts |
| CW614N (CuZn39Pb3) | _____ | | |
| CW608N (CuZn38Pb2) | C37700 (CuZn38Pb2) | ASTM B16/B16M ASTM B124/B124M | Fittings molded and machined on machine tools, riveting and turning, excellent for taps and sanitary equipment |
| CW617N (CuZn40Pb2) | _____ | | |
| CW713R (CuZn37Mn3Al2PbSi) | _____ | | |

SHAPES AND DIMENSIONS

| Shape | Manufacturing Process | Dimensions | Temper* |
|-------|-----------------------|--|--|
| | Hot extruded | Diameter: > 80-140 mm | As per EN standards: M – hot extruded M – cold drawn Half hard: R400 / H100 R410 / H100 H070 R430 / H110 H080 R540 / H130 Hard: R480 / H125 R500 / H120 R500 / H135 R590 / H150 As per ASTM standards: M30 – hot extruded H50 – extruded and drawn H02 – half hard H04 – hard |
| | Cold drawn | Diameter: 3-80 mm | |
| | Hot extruded | Side: > 60-90 mm | |
| | Cold drawn | Side: 5-60 mm | |
| | Hot extruded | Across flat: > 60-90 mm | |
| | Cold drawn | Across flat: 5-60 mm | |
| | Hot extruded | Width: 60-120 mm Thickness: : 25-60 mm Section area: > 3000-7000 mm ² | |
| | Cold drawn | Width: 5-100 mm Thickness: 3-30 mm Section area: < 3000 mm ² Width / thickness ratio: max.12 | |

*Temper depends on alloy and standard.

By request, LAROMET can offer rods and bars for machining on machine tools made of other brass types.

PRODUCTION & SALES CENTER RUDENI
21-25 MACULUI Street, RUDENI, ILFOV County
+40 727 334 518 / +40 727 334 396 / +40 21 208 56 08
sales@laromet.ro

PRODUCTION & SALES CENTER BRAȘOV
60 CARPAȚILOR Street, BRAȘOV, BRAȘOV County
+ 40 733 337 385 / + 40 722 257 714 / + 40 729 036 743
sales@laromet.ro

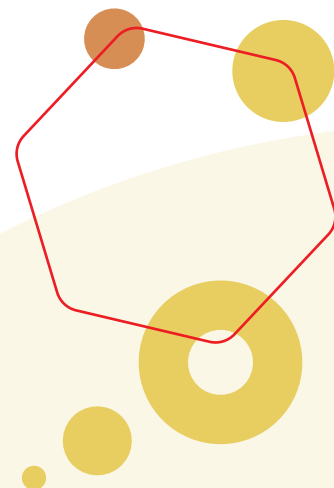
HORIZONTAL CONTINUOUS CAST (AND TURNED) ROUND BRASS TUBES



DIMENSIONS AND STANDARDS

| Correspondent alloys | | Standard, temper | Dimensions | Applications |
|-----------------------------------|---------------------------------|---|--|--|
| Alloys as per EN standards | Alloys as per ASTM standards | | | |
| CC754S (CuZn39Pb1 Al-C) | _____ | Continuous cast EN 1982 GC ASTM B505/B505M Mo7 | Outer diameter: 150 – 250 mm Wall thickness: 15-35 mm | Pistons for hydraulic pumps, bearings, other parts resistant to high mechanical stress and in corrosive environments, including sea water |
| CC762S (CuZn25Al5 Mn4Fe3-C) | C86200 (CuZn25Al4 Mn4Fe3) | | | |
| | C86300 (CuZn25Al6 Mn4Fe3) | | | |
| CC764S (CuZn34Mn3 Al2Fe1-C) | _____ | | | |

By request, LAROMET can offer horizontal continuous cast (and turned) round tubes made of other brass types.



PRODUCTION & SALES CENTER RUDENI
21-25 MACULUI Street, RUDENI, ILFOV County
+40 727 334 518 / +40 727 334 396 / +40 21 208 56 08
sales@laromet.ro

PRODUCTION & SALES CENTER BRAȘOV
60 CARPAȚILOR Street, BRAȘOV, BRAȘOV County
+ 40 733 337 385 / + 40 722 257 714 / + 40 729 036 743
sales@laromet.ro



WROUGHT BRASS ROUND TUBES

ALLOY STANDARDS AND SYMBOLS

| Alloy | | Standard | Applications |
|------------------|------------------|----------|--|
| Chemical symbol | Numerical symbol | | |
| CuZn37 | CW508L | EN 12449 | Mechanical processing on machine tools, manufacturing of various parts, sanitary equipment High resistance machine parts, components for the automotive and aircraft industry, nuts, valves, bearings, bushings, component parts for pumps Interior decoration |
| CuZn39Pb3 | CW614N | | |
| CuZn40Pb2 | CW617N | | |
| CuZn31Si1 | CW708R | | |
| CuZn35Ni3Mn2AlPb | CW710R | | |
| CuZn37Mn3Al2PbSi | CW713R | | |

DIMENSIONS AND TEMPER

| Manufacturing Process | Dimensions | Temper* |
|-----------------------|---|---|
| Hot extruded | Outer diameter: 40-140 mm Inner diameter: 30-90 mm Wall thickness: 5-30 mm Dext./ wall thickness = 3-10 | M – hot extruded M – cold drawn <u>Half hard:</u> R370 / H085 R430 / H115 R440 / H115 R490 / H125 |
| Cold drawn | For CW508L: Outer diameter 26-100 mm Inner diameter: 22-85 mm Wall thickness: 2-15 mm For CW614N, CW617N, CW708R, CW710R: Outer diameter: 35-100 mm Inner diameter: 27-85 mm Wall thickness: 4-15 mm | *Temper depends on alloy Round tubes made of CW713R alloy are offered only hot extruded |

By request, LAROMET can offer round tubes made of other wrought brass.

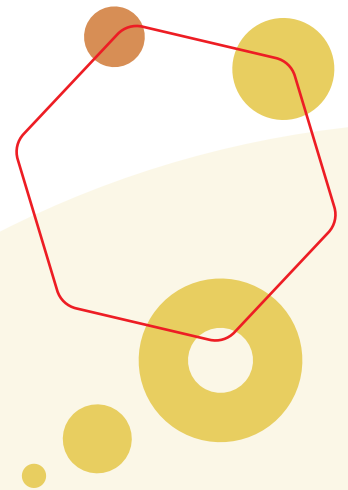


CENTRIFUGAL CAST (AND TURNED) ROUND BRASS TUBES

DIMENSIONS AND STANDARDS

| Correspondent alloys | | Standard, temper | Dimensions | Applications |
|-----------------------------------|---------------------------------|---|---|--|
| Alloys as per EN standards | Alloys as per ASTM standards | | | |
| CC754S (CuZn39Pb1 Al-C) | _____ | Centrifugal cast EN 1982 GZ ASTM B271/ B271M Mo2 | Outer diameter: 150 – 500 mm Inner diameter: min.100 mm Length: max. 940 mm | Pistons for hydraulic pumps, bearings, other parts resistant to high mechanical stress and in corrosive environments, including sea water |
| CC762S (CuZn25Al5 Mn4Fe3-C) | C86200 (CuZn25Al4 Mn4Fe3) | | | |
| | C86300 (CuZn25Al6 Mn4Fe3) | | | |
| CC764S (CuZn34Mn3 Al2Fe1-C) | _____ | | | |

By request, LAROMET can offer centrifugal cast (and turned) round tubes made of other brass types.



PRODUCTION & SALES CENTER RUDENI
21-25 MACULUI Street, RUDENI, ILFOV County
+40 727 334 518 / +40 727 334 396 / +40 21 208 56 08
sales@laromet.ro

PRODUCTION & SALES CENTER BRAȘOV
60 CARPAȚILOR Street, BRAȘOV, BRAȘOV County
+ 40 733 337 385 / + 40 722 257 714 / + 40 729 036 743
sales@laromet.ro



ROUND BRASS WIRE

ALLOY STANDARDS AND SYMBOLS

| Alloy | | Standard | Applications |
|-----------------|------------------|----------|--------------|
| Chemical symbol | Numerical symbol | | |

Round brass wire for general applications

| | | | |
|-----------|--------|----------|---|
| CuZn37 | CW508L | EN 12166 | Lids, rivets, contact terminals |
| CuZn39Pb3 | CW614N | | Mechanical processing on machine tools, riveting, manufacturing of various components |

Round brass wire for welding and brazing

| | | | |
|----------|--------|--------------|---|
| CuZn40Si | Cu470a | EN ISO 17672 | Additive material for welding and brazing |
|----------|--------|--------------|---|

DIMENSIONS AND TEMPER

| Material | Final processing | Diameter | Temper* |
|-----------|------------------|----------|---|
| CuZn37 | Cold drawn | 1-10 mm | M – cold drawn <u>Annealed (soft):</u> R290; H055 R360; H095 |
| CuZn39Pb3 | | 2-10 mm | <u>Half hard:</u> R370; H095 R430; H115 |
| CuZn40Si | | 2-8 mm | <u>Hard:</u> R460; H115 R500; H145 |

*Temper depends on the alloy

NOTE

- For CuZn37 (CW508L) and CuZn39Pb3 (CW614N) alloys, wires are offered in coils type "bunched coil", with a weight of max.100 kg.
- For CuZn40Si alloy (Cu470a), wires are offered in coils type "bunched coils" with a weight of max. 50 kg or rods with a length of 1000 mm.

By request, LAROMET can offer round wire made of other brass types.